



June 9, 2015

Product Alert

Type of Notification: Counterfeit

FM Approvals has been made aware of the existence of an indicating butterfly valve produced to resemble a similar FM Approved valve made by Fivalco. The counterfeit valve includes the FM Approvals marking, but is NOT FM Approved. The counterfeit valve was discovered in Turkey.

Description: Indicating Butterfly Valve

Make/Model: Unknown manufacturer

Nameplate data: Product is labeled with the name “Fivalco, Inc.”

FM Approval status: Not FM Approved- never tested

Hazard Involved: The counterfeit product has never been tested or examined by FM Approvals so the quality of the product is unknown. Examples of potential quality issues may include, but are not limited to, stem and seat leakage, degradation after cycling, inadequate protection from excess hand wheel torque, and the unknown reliability of the indicators.

If you suspect you are in possession of a counterfeit Fivalco Indicating Butterfly Valve (IBV) bearing the FM Approvals certification marking, please bring that to the attention of:

Antonio Pires

FM Approvals, Quality Department

Norwood, MA, USA

+1 (1)781 255 4825

Email: antonio.pires@fmapprovals.com

Figure 1 below shows a photograph of the top of the counterfeit valve. The nameplate indicates it is a model DW produced in 2013 with a maximum rated working pressure of 300 psi. Production of the Fivalco IBV ceased on the model DW before 2013 and when it was produced, its maximum rated working pressure was 175 psi. The fitting, provided for connection to electric conduit for the monitoring wires, appears also to be steel. The authentic DW used a brass fitting, similar to the one seen on the authentic model DG in Figure 2 on the following page.



Figure 1. Counterfeit valve

Figure 2 below shows a photograph of an authentic Fivalco DG valve, similar to the previously produced DW indicating butterfly valve. The markings on the nameplate are very similar on the counterfeit valve aside from the previously mentioned discrepancies. Note however that Fivalco rivets their nameplates to the gear box cover while the counterfeit valve nameplate appears to be attached with adhesive.

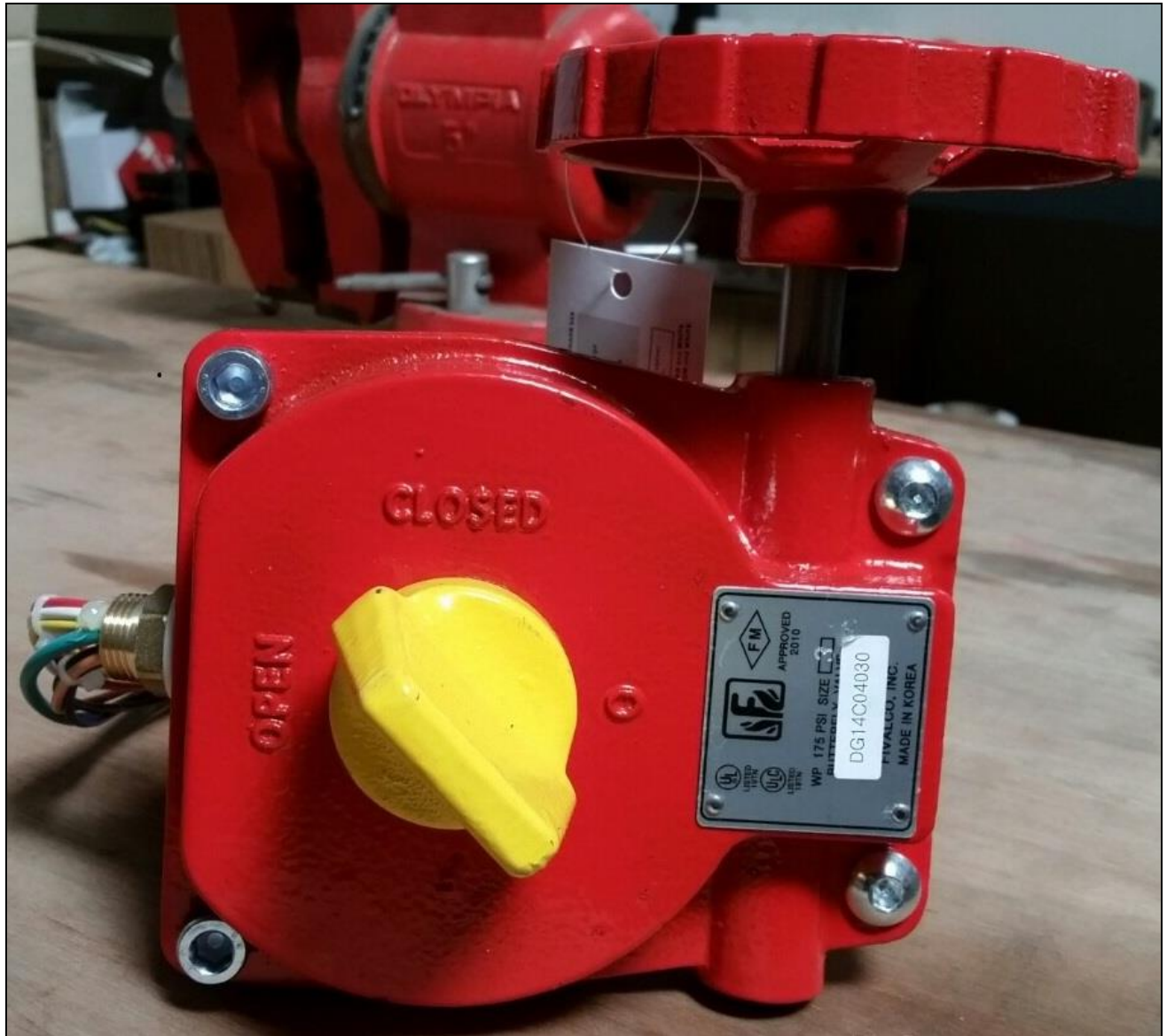


Figure 2. Authentic Fivalco model DG Indicating Butterfly Valve